



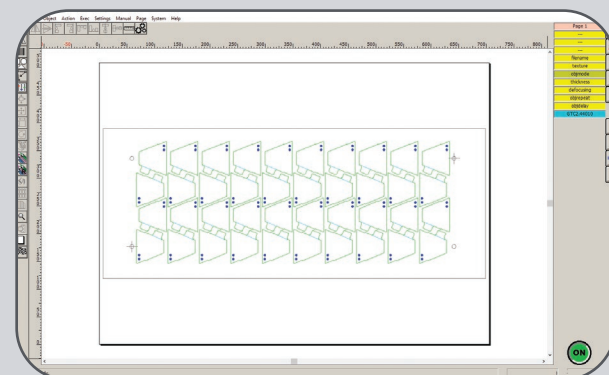
## ICARO SOFTWARE

Our proprietary Icaro software is very intuitive and user-friendly. The easy import of the files, both raster graphics and vector images (BMP, JPEG, PDF, EPS, DXF, PLT,...) and the easy setting of the laser parameters make Icaro the innovative multifunction software interface made 100% SEI Laser.

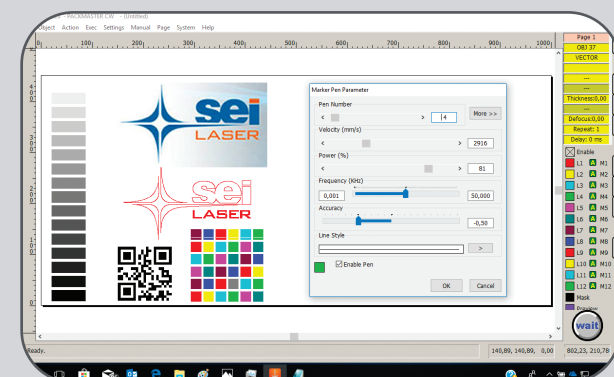
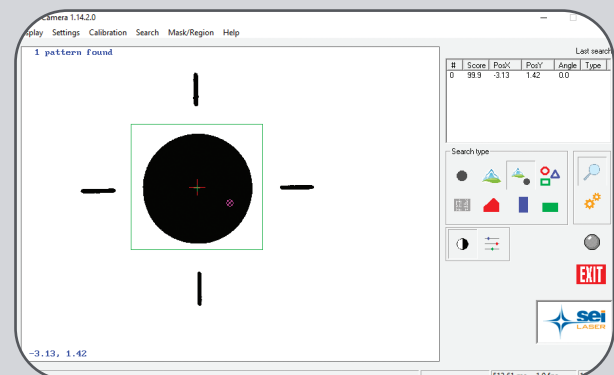
- CCD camera for registry laser processing and for the automatic upload of the files thanks to single/multi printing markers and 1D/2D barcode readers.
- Effective system and laser diagnostics: easy remote assistance operations.
- Integrated safety barriers.
- Compressed air blade.

Every SEI Laser system can be integrated into automated digital control production processes and it is in compliance with the Industry 4.0 certification.

Icaro Software



Icaro CCD Camera



Icaro Software

## TIME OPTIMIZATION FOR INFINITE PRODUCTIVITY

# INFINITY LINE



**SEI S.p.A.**  
Via R. Ruffilli, 1  
24035 Curno (BG) - Italy  
T. +39 035 4376016  
F. +39 035 463843  
info@seilaser.com  
www.seilaser.com

**SEI S.p.A.**  
**Production site**  
Via San Cassiano, 2  
24030 Mapello (BG) - Italy  
T. +39 035 4376016  
info@seilaser.com  
www.seilaser.com

**SEI Laser Converting**  
Via Praz dai Trois, 16  
33030 Buja (UD) - Italy  
T. +39 0432 1715827  
F. +39 0432 1715828  
info@seiconverting.it  
www.seilaser.com

**SEI Deutschland GmbH**  
Moosweg 9  
D-82386 Huglfing - Germany  
T. +49 8802 913600  
F. +49 8802 9136066  
info@seilaser.de  
www.seilaser.de

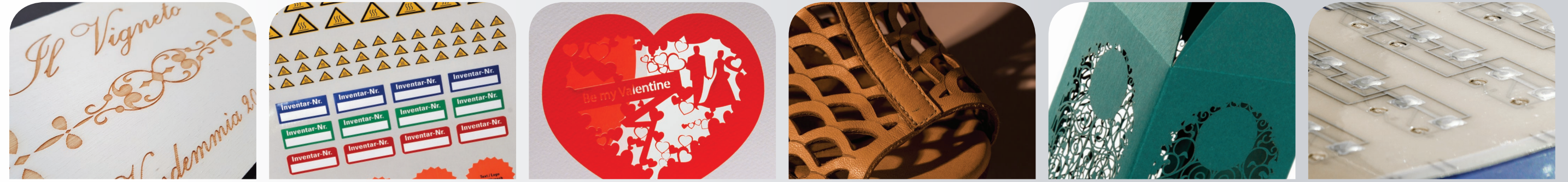
**SEI Laser France**  
Le Korner  
17 Rue du Prof. Jean Bernard  
69007 Lyon - France  
T. +33 4 37 70 48 93  
france@seilaser.com  
www.seilaser.com/fr/

**SEI Laser Latin America  
Industria e Comercio  
de Equipamentos LTDA**  
Rua Antonia Martins Luiz, 410,  
CEP: 13347-404,  
Distrito Industrial João Narezzi,  
Indaiatuba San Paulo - Brasil  
T. +55-(19)-3935-1550  
T. +55-(19)-3935-2950  
Whatsapp: +55-(19)-99350-4466  
atendimento@seilatinamerica.com.br  
seilatinamerica.com.br

**SEI Laser Systems (SHAOXING)  
Co. Ltd.**  
N°128, Zheduan Road,  
Pukou Development, Shengzhou,  
Post Code 312400 Zhejiang - China  
T. +86 575 83933766  
F. +86 575 83933766  
info@seilaserasia.com  
www.seilaserasia.com



# Let your CREATIVITY OUT



MAXIMUM PRODUCTIVITY FOR UNPARALLELED MARKING AND CUTTING.

## INFINITY LINE

SEI Laser, the leading Italian manufacturer of industrial laser systems, introduces Infinity Line, the innovative and flexible range of laser systems specifically designed for high speed thin material processing (both sheets and slabs) thanks to rotary table and meet all customer's needs thanks to the different working areas and laser configurations.

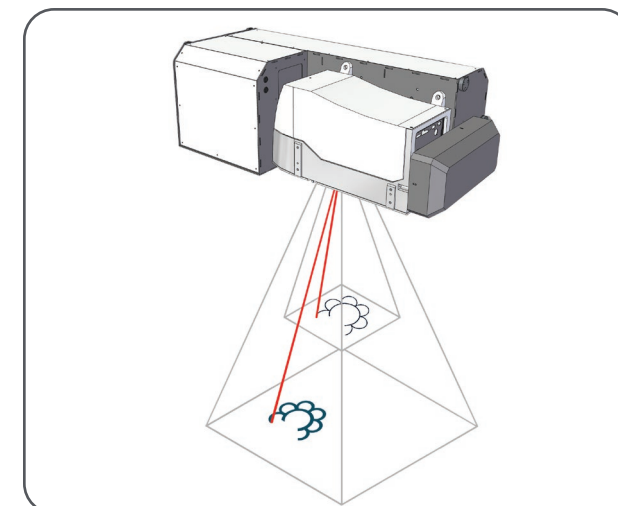
**Processes:** cutting, marking, engraving and perforation.

**Processable materials:** paper, card, leather, faux leather, hide, natural and technical textiles, denim, rubber, wood, acrylic, acetates and organic materials, plastic sheets and films.

**Sectors:** Graphic Arts, footwear, leather, labeling, packaging, furnishing, interior design, job shop, automotive, electronics.

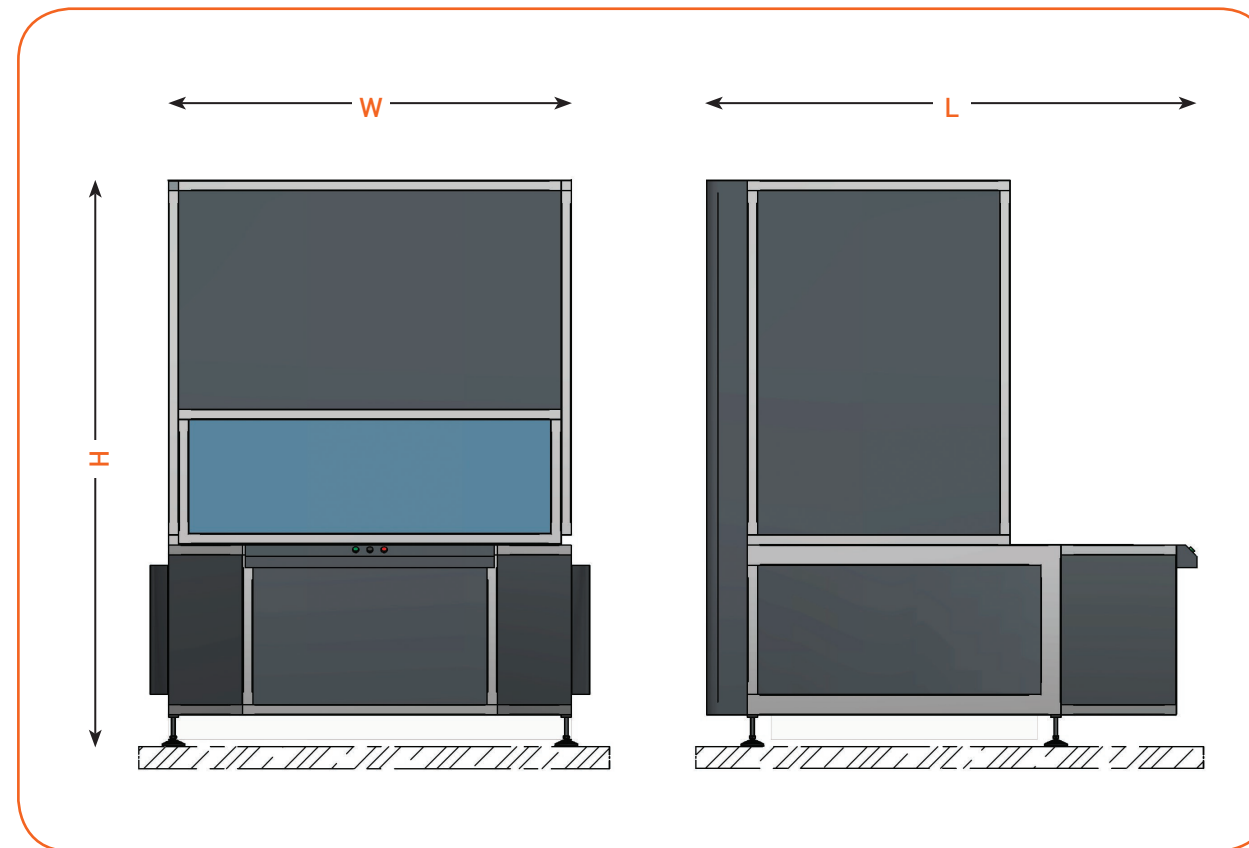
- Device for dynamic control of focal point "Dynamic Beam Expander" directly by software, for high performance.
- Rotary table to increase productivity: you can process the material without stopping the continuous work cycle, optimizing loading/unloading time.
- CCD camera for high precision registry
- laser processing.
- Class 1 for the safety of the operator and work environment.
- It can be perfectly integrated into any production environment.
- 100% SEI Laser design and manufacture: guaranty of stability and repeatability.

To guarantee stability, process repeatability and maximum precision:



- Z axis controlled by software enables the optimization of the laser spot size according to the size and the thickness of the material, as well as the working area.

## Dimensions and weights:



	W (mm)	L (mm)	H (mm)	Weight (Kg)
<b>INFINITY 3550</b>	1200	1330	2110	507
<b>INFINITY 5070</b>	1610/1850	1890/1990	2360	707
<b>INFINITY 7070</b>	1950/2500	2100/2220	2400	1119

## Technical features:

Available models	3550				5070				7070					
Versions	V80	V150	V150	V300	V400	V500	V150	V300	V400	V500	V150	V300	V400	V500
Laser technology	Sealed (CO <sub>2</sub> ) diffusion cooled slab laser excited in radiofrequency													
Laser Power	80W	150W	150W	300W	420W	540W	150W	300W	420W	540W	150W	300W	420W	540W
Laser wavelength (µm)	10,6 (10,25-9,3)													
Pulse frequency (khz)	0-100 khz													
Cooling	Liquid cooling (closed loop chiller)													
Scan head	Hi30	Hi30/Hi50	IScan				IScan							
Min working area (mm)	200x200	200x200 (Hi30) 250x250 (Hi50)	500x500				500x500							
Spot size	0,22	0,22 (Hi30) - 0,2 (Hi50)	0,22				0,22							
Max working area (mm)	500x350		700x500				700x700							
Spot size	0,42	0,42 (Hi30) - 0,3 (Hi50)	0,33				0,33							
Z axis (mm)	650													
Software interface	Icaro on Windows™ platform													
Vector images import	.dxf; .plt (hpgl); .ai; .eps; .pdf;													
Raster graphics import	.bmp; .jpg; .tiff; .wmf; .pcd; .pnt; .pcx; etc.													
Norm compliance	2014/35/EU Low Voltage Directive													
	2006/42/CE Machinery Directive													
	2014/30/EU Electromagnetic Compatibility Directive													
	IEC EN 60825-1 Laser Safety													
Compressed air	1-6 Bar 0,2 L/min V500 - 6 bar 50NL/min (air blade)													
Max power consumption	5 KW 10 A chiller included				8kw 13 A chiller excluded	9kw 14 A chiller excluded	11kw 20 A chiller excluded	5kw 10 A chiller included	8kw 13 A chiller excluded	9kw 14 A chiller excluded	11kw 20 A chiller excluded			
Power supply	3 N/pf ac 400V 50/60 hz													