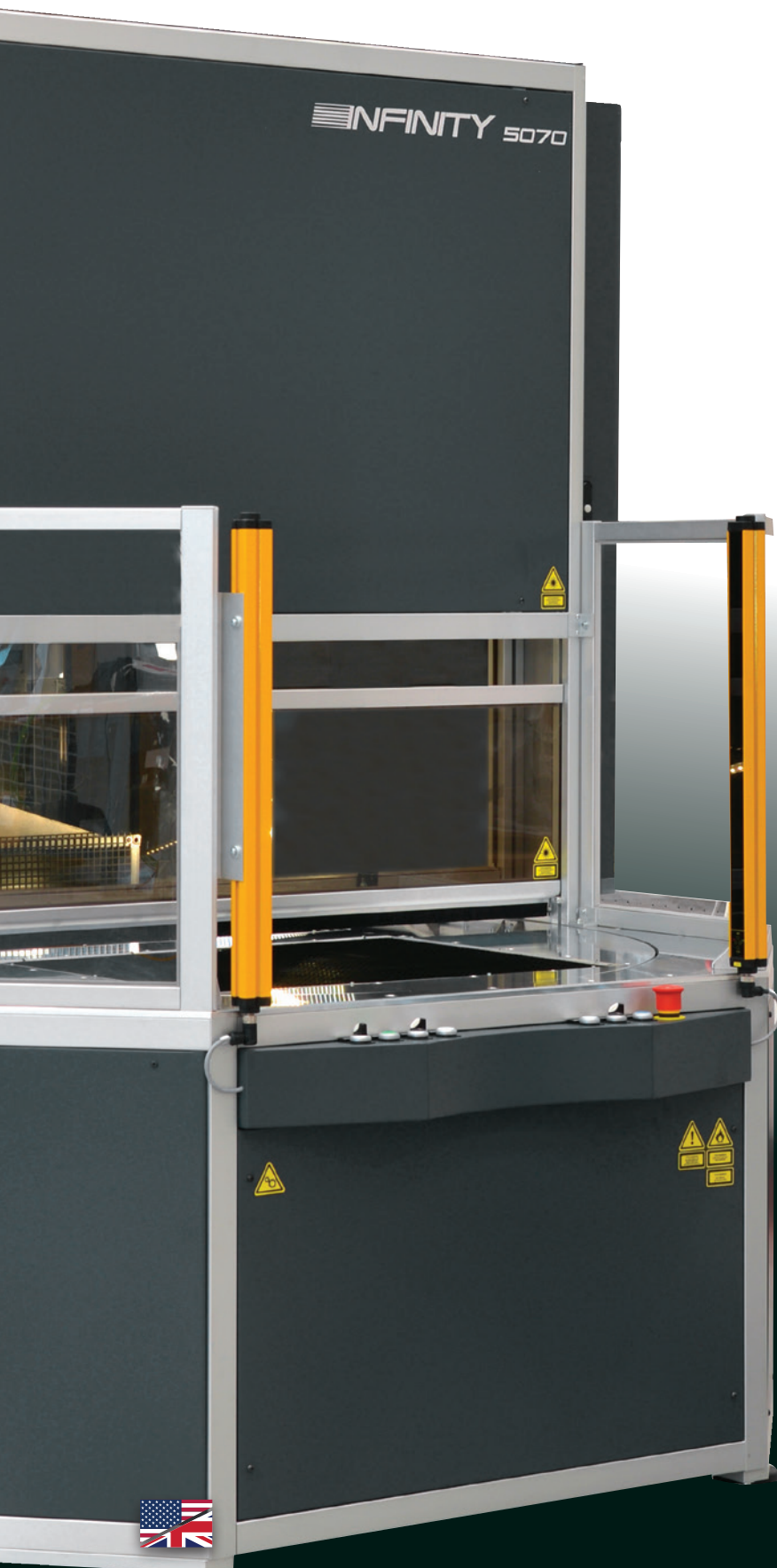


# INFINITY LINE





Since 1982 we have been a solid industrial reality,  
leader in **laser** technology.

We are the ideal partner at the service of customers,  
to offer them innovative solutions and capable to  
respond to specific market requests  
of reference.

Thanks to our know-how and continuous investments,  
we supply laser systems that ensure significant  
performances in terms of costs, operational efficiency  
and quality of the final product.

The complete range of laser systems, developed  
from our R&D department, creates **value**  
and meets the application needs of all our customers.

# THE LASER WAY

For **40 years** we have been producing our laser systems in Italy thanks to the five departments (mechanical, electronic, optoelectronic, IT and production) that follow all the stages of the development process.

**SEI Laser** systems are controlled by software and firmware developed internally, by a team of expert programmers able to respond promptly to the various application needs.

Cutting-edge technologies require commitment and constant research; our history has its cornerstones in loyalty and mutual esteem with customers.


This alchemy has allowed us to establish professional and solid relationships, which have lasted for decades and are constantly renewed.





# TIME OPTIMIZATION FOR INFINITE PRODUCTIVITY





SEI Laser, the leading Italian manufacturer of industrial laser systems, introduces **Infinity Line**, the innovative and flexible range of CO<sub>2</sub> laser systems specifically designed to meet all customer requirements for processing sheet and slabs materials, thanks to the different working areas and laser configurations.

This solution is available in **3 configurations**, it is equipped with CO<sub>2</sub> laser sources with "sealed off" technology and a power from 80 up to 500 W. The Infinity Line is able to process thin organic or composite sheet and slabs materials thanks to a two-position rotary table which increases the productivity by optimizing loading/unloading time.

The possibilities are **endless** and unparalleled: starting from an amazing cut of very complex profiles on paper and cardboard, through micro-perforation, to the perfect marking of a panel.

Infinity Line is available in different configurations and can be perfectly integrated into any production environment thanks to its several options and accessories, which are specially designed.





# INFINITY LINE

Infinity Line is the range of CO<sub>2</sub> professional laser systems specially designed by SEI Laser for cutting, marking, engraving and perforating thin sheets or slabs of material. These laser solutions are characterized not only by their amazing performances, but also by both their flexibility and endless productivity.

Infinity Line CO<sub>2</sub> laser systems ensure industry-leading processing speed and high performance thanks to the adoption of a 3+1 axis optical configuration with mobile optics moved by a galvanometric motor.

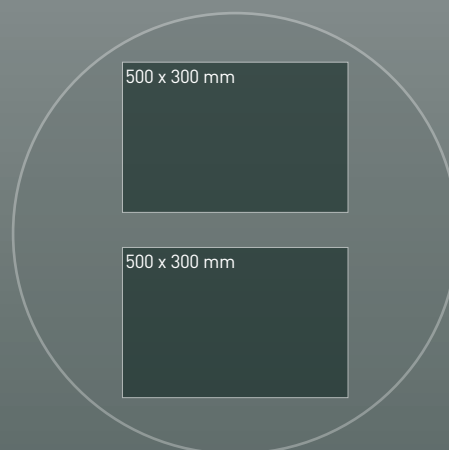
The two-position rotary table with which the Infinity Line laser systems are equipped with, ensures a significant increase in the productivity: the loading of the material on the table takes place simultaneously with the laser processing and it guarantees both a reduction in production time and the optimization of loading and unloading operations, which therefore take place in masked time.

The solid structure, combined with software-controlled Z-axis movement, guarantees unique production and quality performances as well as the optimization of the laser spot based on the dimensions of the material and the working area.

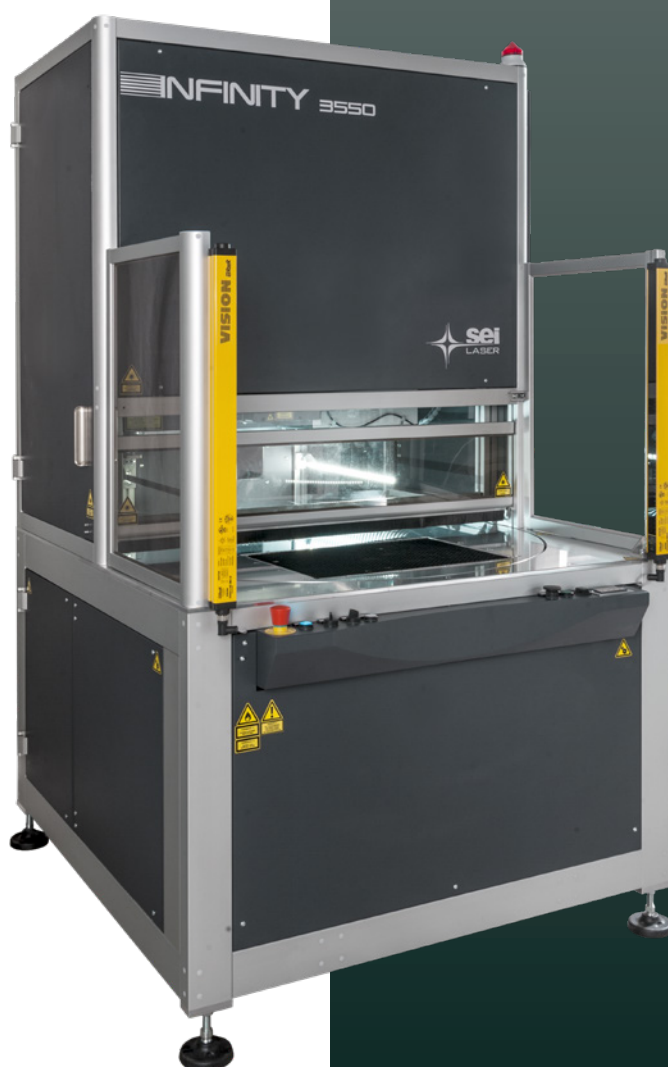
The CO<sub>2</sub> Infinity Line laser systems are extremely reliable and performing, thanks to the innovative iScan scan head, they ensure the maximum quality of the laser beam.



The **Infinity 3550** system is a laser solution equipped with a two-positions rotary table, which is perfect for any marking, engraving, cutting and die-cutting process on thin sheets or slabs, which is usually sensitive to CO<sub>2</sub> laser radiations, with dimensions up to 500x300 mm.



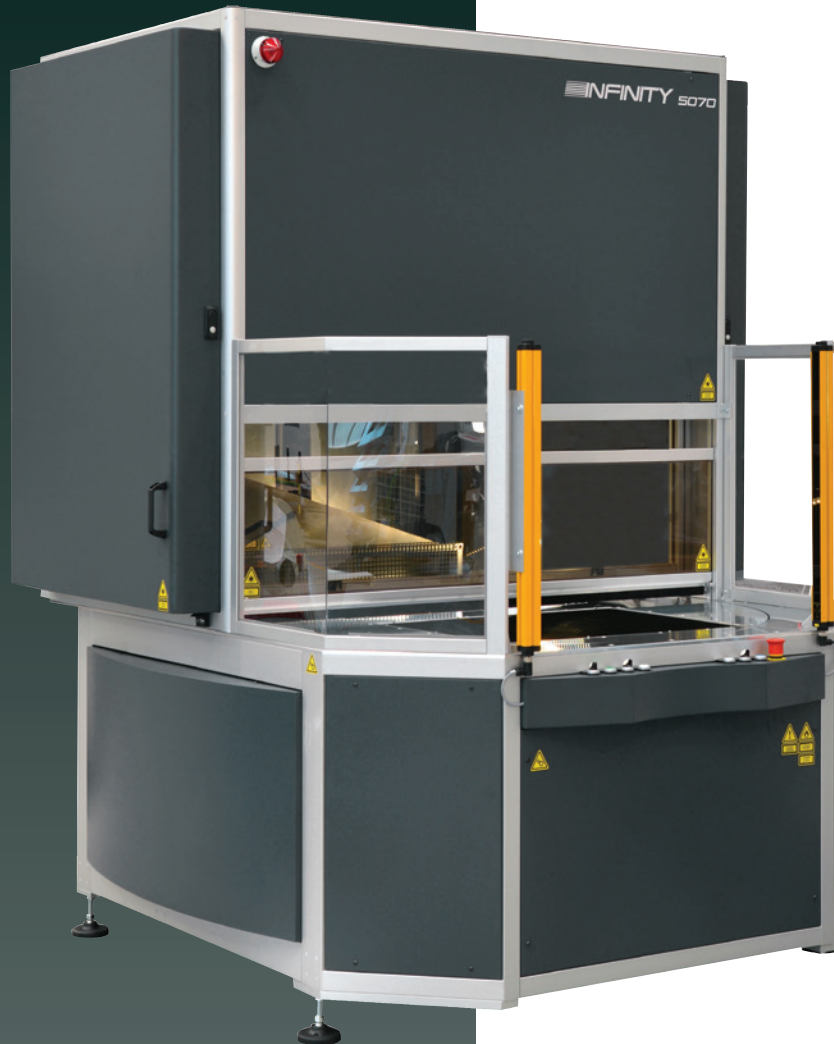
working area



# INFINITY 3550

# INFINITY

## 5070



700 x 500 mm

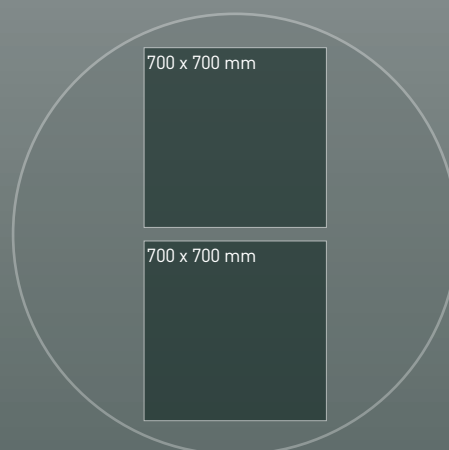
700 x 500 mm

working area

The **Infinity 5070** system is a laser solution equipped with a two-positions rotary table, which is perfect for any marking, engraving, cutting and die-cutting process on thin sheets or slabs, which is usually sensitive to CO<sub>2</sub> laser radiations, with dimensions up to 700x500 mm.



The **Infinity 7070** system is a laser solution equipped with a two-positions rotary table, which is perfect for any marking, engraving, cutting and die-cutting process on thin sheets or slabs, which is usually sensitive to CO<sub>2</sub> laser radiations, with dimensions up to 700x700mm.

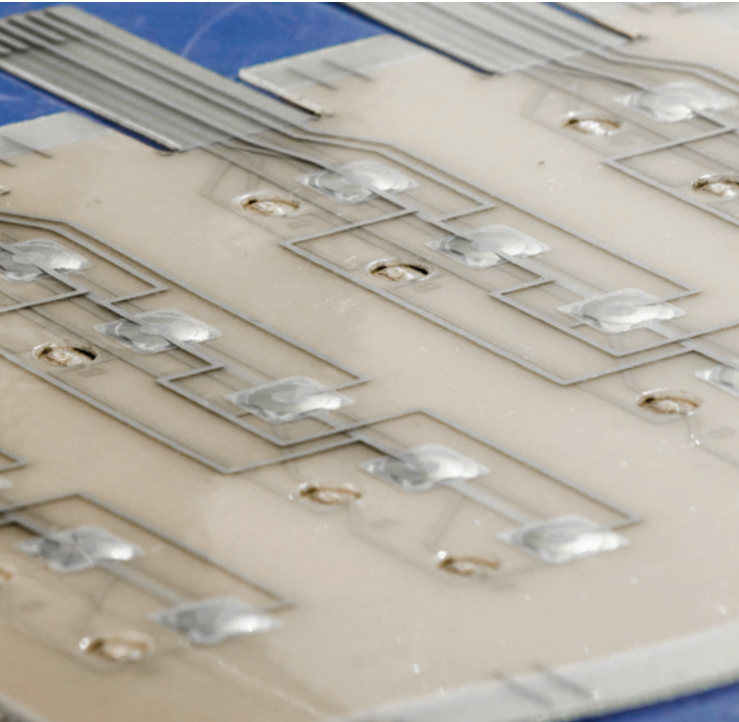


working area



# INFINITY 7070

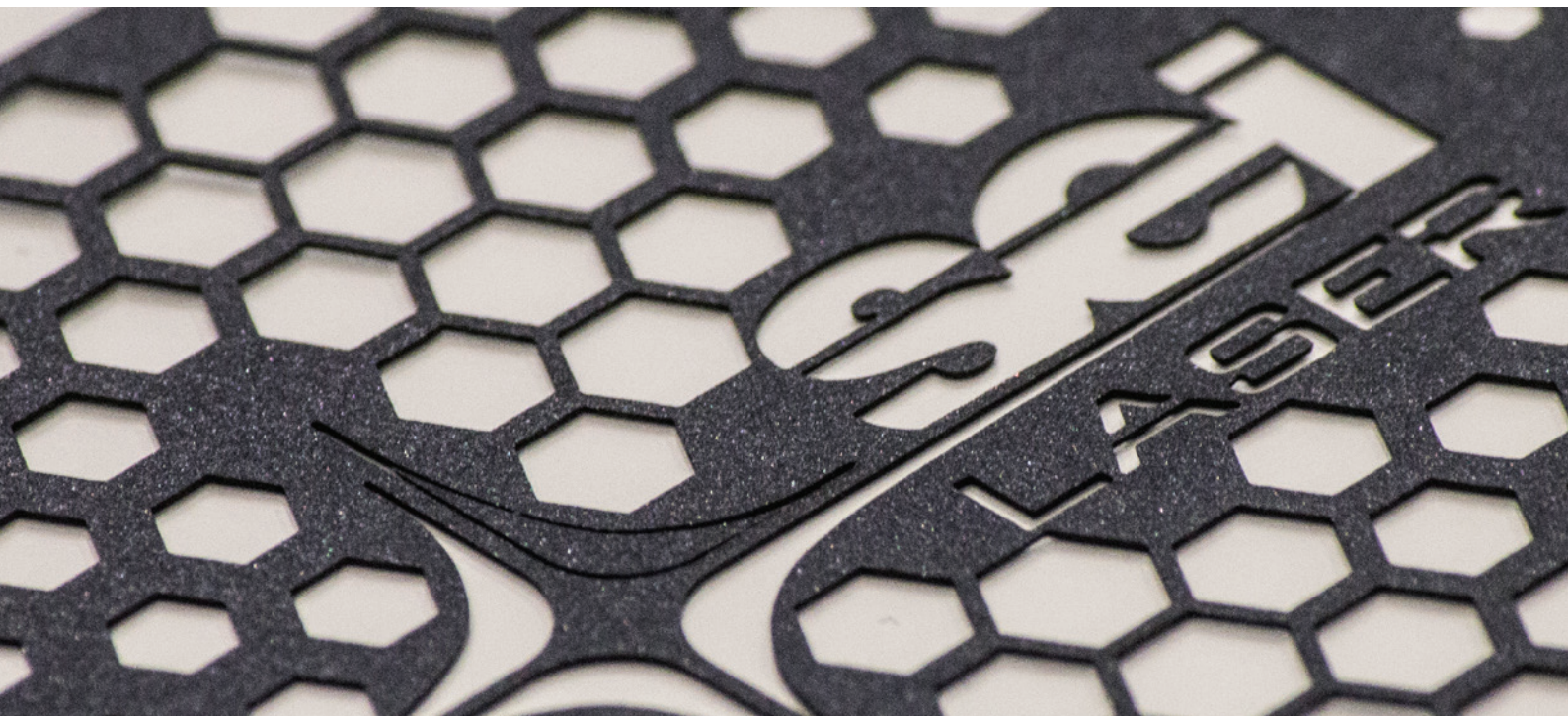
# UNIQUE PLUS



- **Productivity**
- Ease of use
- High **accuracy**
- Very low **maintenance, robustness** and long life of the laser source
- Reduced floor space and various configurations which make the system suitable for any environment and production process
- **Industry 4.0:** easy integration within digitized and automated workflows

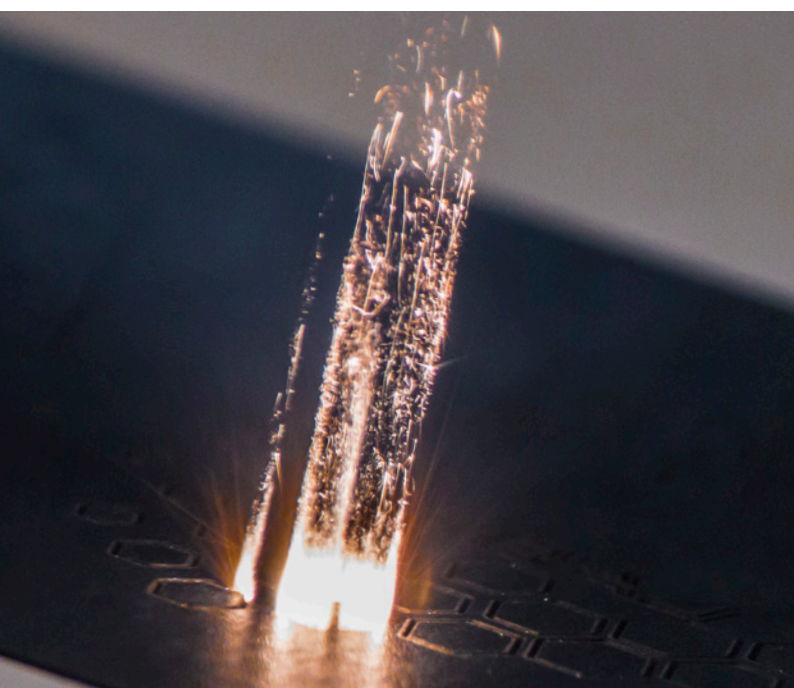






- 100% designed and manufactured by SEI Laser: stability and repeatability are ensured
- Software-controlled Z-axis enables the optimization of the laser spot sizer.
- Class 1 for operator safety and working environment
- Intuitive and user-friendly proprietary **Icarus software**



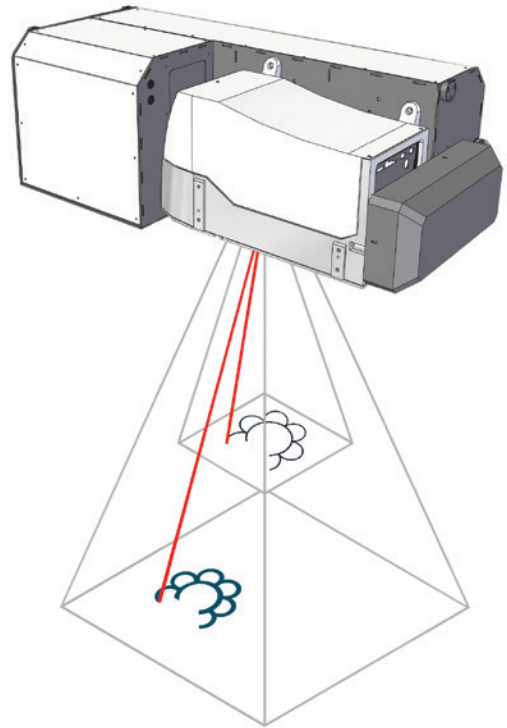


**100%  
MADE  
IN ITALY**

# EXTREME FLEXIBILITY

The various available configurations of Infinity Line make the system suitable for any environment and production process.

- Vision system for automatic centering of processing according to the position of the workpieces (optional)
- Safety life bars for operator protection within the loading area (optional)
- The Z-axis controlled by the software enables the optimization of the laser spot according to the dimensions and thickness of the material, as well as the working area.





# PROCESSABLE MATERIALS



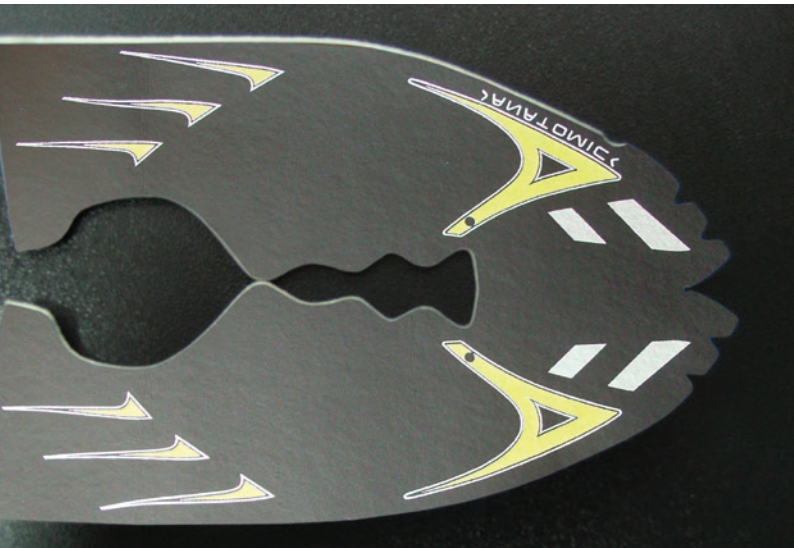
Infinity Line is able to process countless organic and composite **materials** in sheet or slab.

## Plastic Materials:

- Acrylic (PMMA)
- Acetates
- Plastic laminated films
- Foil
- Plastic materials







**Fabrics:**

Leather  
Synthetic leather  
Skin  
Natural fabrics  
Denim



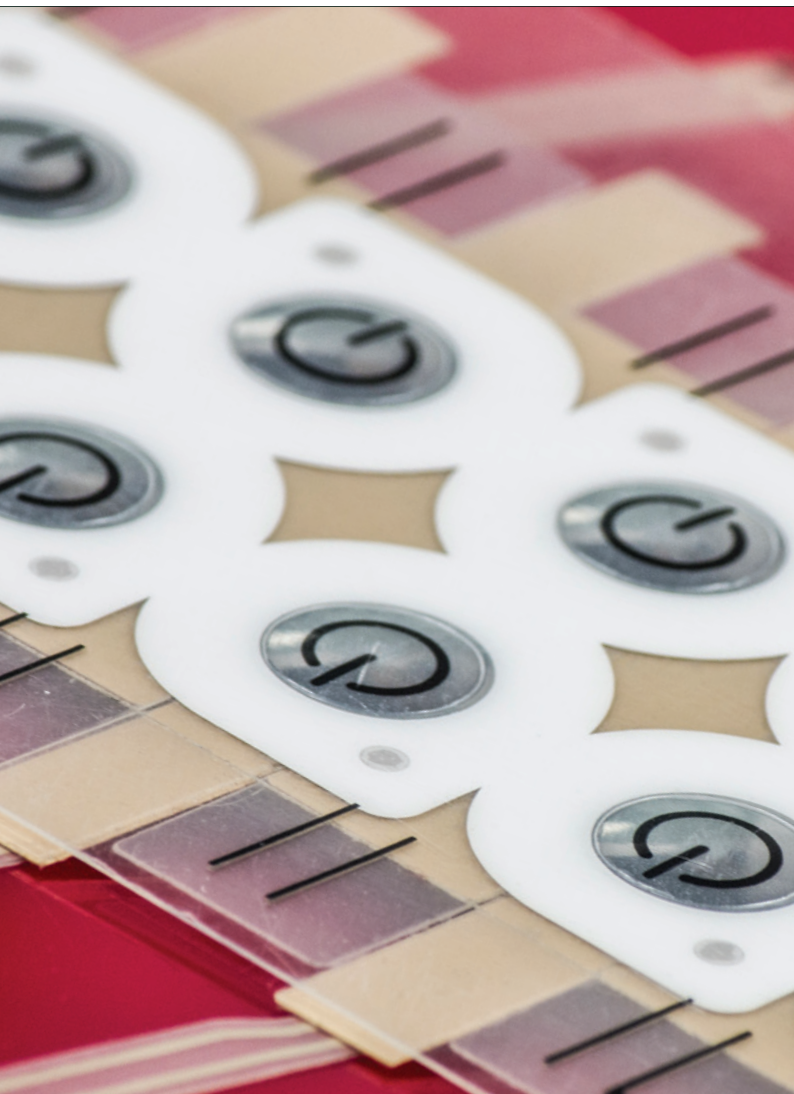
**Other materials:**

Paper  
Cardboard  
Corrugated  
Rubber  
Wood

# ENDLESS APPLICATIONS

The various configurations available make the Infinity Line systems extremely flexible, perfect to meet any application need.

Graphic arts,  
Footwear sector,  
Leather processing,  
Labels,  
Interior design,  
Furnishing accessories

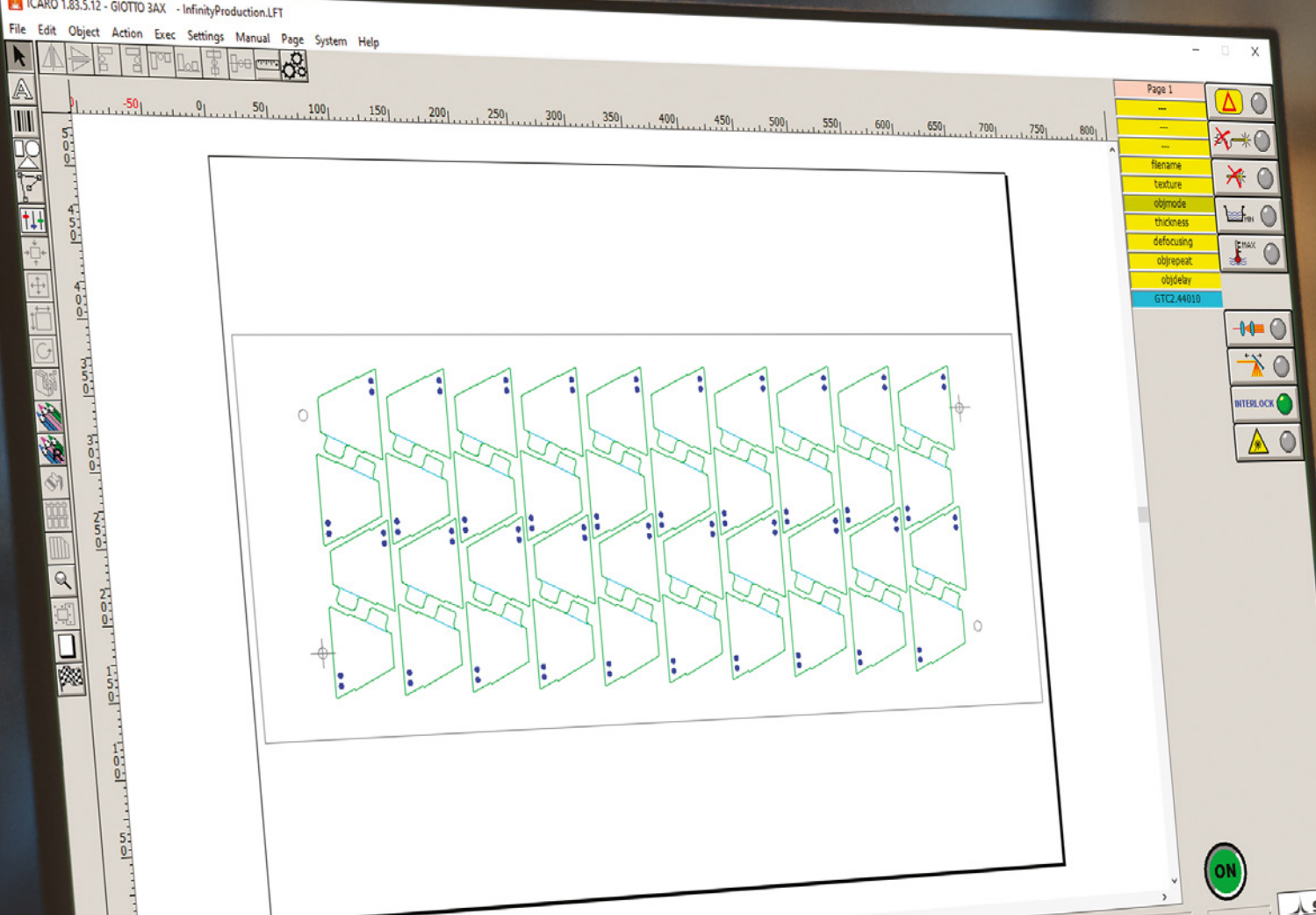




Job shop,  
Automotive sector,  
Electronics,  
Paper finishing,  
Packaging





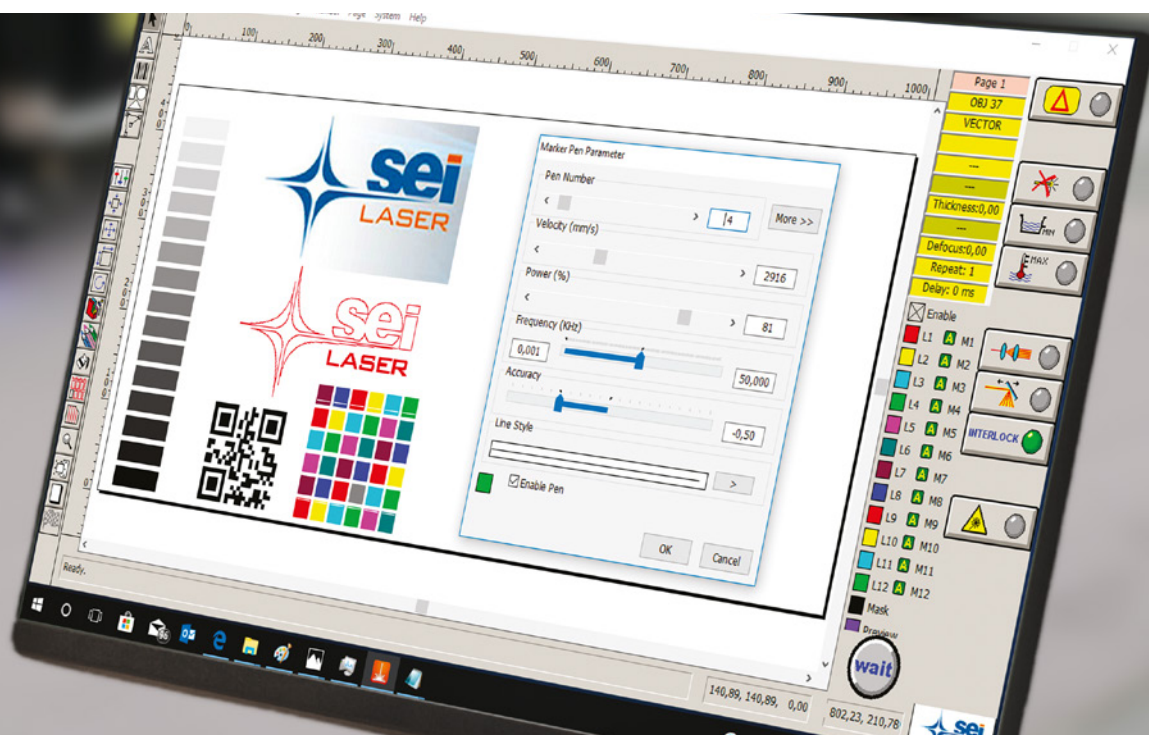


Our proprietary software **Icaro**  
it is extremely intuitive and user-friendly.

The easy import of both CAD and graphic files and the  
simple setting of laser parameters make Icaro the  
innovative multifunctional software interface,  
"made in Italy" 100% SEI Laser.

- CCD camera for laser register processing and automatic file upload thanks to single or multiple print markers and 2D / 3D barcode readers with radial / perpendicular RGB lighting.
- Thanks to the integration with customized Post Processors, Icaro allows a simple, fast and intuitive job design and automatic programming of the laser system for cutting ferrous and non-ferrous metals with low thickness.
- Effective system and laser source diagnostics: simple remote assistance operations.

# ICARO SOFTWARE



# INSTALLATION

All **SEI Laser** systems are designed for integration into automated digital control production processes and are **certified** for compliance with Industry 4.0 legislation.

All SEI Laser systems are certified to meet the following requirements:

- control by means of CNC (Computer Numerical Control) and / or PLC (Programmable Logic Controller);
- interconnection to factory IT systems with remote loading of instructions and / or part programs;
- automated integration with the logistic system of the factory or with the supply network and / or with other machines of the production cycle;
- simple and intuitive interface between man and machine;
- compliance with the most recent parameters of safety, health and hygiene in the workplace.







SEI Laser, thanks to its wide range of technical assistance services offered and its widespread presence, guarantees a punctual, effective and personalized response to the different needs of customers.

In addition to technical interventions in the field, SEI Laser offers a valid **remote control** service.

The communication between the company and the customer, managed in real time via chat, allows the operator to be guided **step-by-step** in the following technical operations:

- visualization and modification of the configuration **parameters** of the laser system;
- visualization and modification of the working parameters;
- **diagnostics** of the laser source and control parts;
- LOG relating to the operation history;
- file transfer;
- update of the machine management software.

# AFTER SALES

# CONFIGURATIONS

## Versions

Laser technology

Laser power (W)

Laser wavelength (μm)

Pulse frequency (kHz)

Scan Head

Min working area (mm)

*Laser spot size (μm)*

Max working area (mm)

*Laser spot size (μm)*

Footprint (mm)

Z axis travel (mm)

Cooling

## OPTIONS

Vision system

Integrated safety bars

Suction accessories

HW and SW accessories





INFINITY 3550		INFINITY 5070			
V80	V150	V150	V300	V400	V500
Sealed (CO2) diffusion cooled slab laser excited in radiofrequency					
80	150	150	300	420	540
10,6 (10,25-9,3)					
0-100					
Hi30	Hi30 / Hi50	I-Scan			
200x200	200x200 (Hi30) / 250x250(Hi50)	500x500			
220	220 (Hi30) / 200 (Hi50)	220			
350x500		500x700			
420	420 (Hi30) / 300 (Hi50)	330			
335 x 580 x 710			570 x 740 x 1146		570x740x1220
650					
Liquid cooling (closed loop chiller)					

•	•
•	•
•	•
•	•

The technical specifications indicated, for illustrative purposes, may vary during the commercial offer phase

# CONFIGURATIONS

## Versions

Laser technology

Laser power (W)

Laser wavelength (μm)

Pulse frequency (kHz)

Scan Head

Min working area (mm)

*Laser spot size (μm)*

Max working area (mm)

*Laser spot size (μm)*

Footprint (mm)

Z axis travel (mm)

Cooling

## OPTIONS

Vision system

Integrated safety bars

Suction accessories

HW and SW accessories





INFINITY 7070			
V150	V300	V400	V500
Sealed (CO2) diffusion cooled slab laser excited in radiofrequency			
150	300	420	540
10,6 (10,25-9,3)			
0-100			
I-Scan			
500x500			
220			
700x700			
330			
335 x 580 x 710	570 x 740 x 1146		570 x 740 x 1220
650			
Liquid cooling (closed loop chiller)			

•			
•			
•			
•			

The technical specifications indicated, for illustrative purposes, may vary during the commercial offer phase

**SEI S.p.A.**

Sito produttivo  
Via San Cassiano, 2  
24030 Mapello (BG) - Italy  
T. +39 035 4376016  
[info@seilaser.com](mailto:info@seilaser.com)  
[www.seilaser.com](http://www.seilaser.com)

**SEI Laser Converting**

Via Praz dai Trois, 16  
33030 Buja (UD) - Italy  
T. +39 0432 1715827  
F. +39 0432 1715828  
[info@seiconverting.it](mailto:info@seiconverting.it)  
[www.seilaser.com](http://www.seilaser.com)

**SEI Deutschland GmbH**

Moosweg 9  
D-82386 Huglfing - Germany  
T. +49 8802 913600  
F. +49 8802 9136066  
[info@seilaser.de](mailto:info@seilaser.de)  
[www.seilaser.de](http://www.seilaser.de)



**CLOSE TO  
THOSE WHO  
SEE FAR**



**SEI S.p.A.**  
**Via R. Ruffilli, 1**  
**24035 Curno (BG) - Italy**  
**T. +39 035 4376016**  
**F. +39 035 463843**  
**info@seilaser.com**  
**www.seilaser.com**

**SEI Laser France**

Le Korner  
17 Rue du Prof. Jean Bernard  
69007 Lyon - France  
T. +33 4 37 70 48 93  
france@seilaser.com  
www.seilaser.com/fr

**SEI Laser Latin America**

Industria e Comercio  
de Equipamentos LTDA  
Rua Antonia Martins Luiz, 410,  
CEP: 13347-404,  
Distrito Industrial João Narezzi,  
Indaiatuba San Paolo - Brasil  
T. +55-(19)-3935-1550  
T. +55-(19)-3935-2950  
Whatsapp: +55-(19)-99350-4466  
atendimento@seilatinamerica.com.br  
seilatinamerica.com.br

**SEI Laser Systems (SHAOXING)**

Co. Ltd.  
N°128, Zheduan Road,  
Pukou Development, Shengzhou,  
Post Code 312400 Zhejiang - China  
T. +86 575 83933766  
F. +86 575 83933766  
info@seilaserasia.com  
www.seilaserasia.com





SEI S.p.A.  
Via R. Ruffilli, 1  
24035 Curno (BG) - Italy  
T. +39 035 4376016  
F. +39 035 463843  
[info@seilaser.com](mailto:info@seilaser.com)  
[www.seilaser.com](http://www.seilaser.com)